

2025 ANNUAL IMPACT REPORT



CSU SPUR

COLORADO STATE UNIVERSITY





LETTER FROM LEADERSHIP

In the two-and-a-half years that CSU Spur has been fully open, the campus has grown steadily as we've expanded our programming, educated more students, welcomed more visitors, and responded to community needs and interests. CSU Spur has hit important milestones, receiving recognition and winning awards. The Spur team has welcomed new partners while solidifying existing programs, collaborations, and endeavors.

People continue to learn about CSU Spur from happy visitors, including those who stop by during the National Western Stock Show, and thanks to our social media presence, television and news stories, and recommendations from those who attend Spur events. Spur has set records, from 2nd Saturday attendance numbers to dollars driven into the community through our anchor institution efforts. The Spur community has been strengthened by regular gatherings, intentional creation of cross-division projects, and by daily interactions that have built a community focused on collaboration and shared goals.

While I am personally proud of and grateful for the consistent effort, positivity, and creativity of the Spur community, all of which have led to the stories you will find highlighted in this 2025 Impact Report, I am also excited at what is to come.

This fall, Spur will host Spur Start, a program for CSU students to complete the first year of their college education at Spur. In this program, students in a small cohort will take advantage of the unique learning experiences the Spur campus is well suited to provide while also seeing cost savings from being able to live at home. In January, we will open our doors to attendees of a very different National Western Stock Show, one that features the new Legacy Building and other state-of-the-art facilities adjacent to Spur.

While the Spur campus has moved through its true start-up phase, we continue to evolve, to be responsive to our community and our times, and to fulfill the promise of a modern land-grant institution.

I hope you will be inspired by what you see in these pages and that you will join us in the coming year as we connect people, accelerate innovation, and motivate learners of all ages.

A handwritten signature in blue ink that reads "Jocelyn Hittle". The signature is fluid and cursive.

Jocelyn Hittle,
Associate Vice President for
CSU Spur & Special Projects

*"...we continue
to evolve, to be
responsive to our
community and our
times, and to fulfill the
promise of a modern
land-grant institution."*

- JOCELYN HITTLE





INSIDE

Letter from Leadership	2
Our Purpose	3
Inside	3
About CSU Spur	4
Visitor Engagement	6
PreK-12 Education	8
Lifelong Learning	10
Research	12
Outreach	13
Innovation	14
Communications	15
Events	16
Community	17
Sustainability	18
Thank you	19

OUR PURPOSE

CSU Spur is a public education and research campus that **Connects** people, **Accelerates** innovation, and **Motivates** transformation. Through cross-sector partnerships, hands-on experiences, and access to CSU research and expertise, Spur inspires exploration of new ideas, careers, and solutions in food, water, health, and sustainability.

Located at the National Western Center in Denver, Spur welcomes thousands of visitors annually to its three sustainable, state-of-the-art facilities.



ABOUT CSU SPUR

MISSION STATEMENT

At CSU Spur, we believe that education, innovation, and collaboration are the keys to solving global challenges in food, water, health, and sustainability. The campus exists to connect people, accelerate innovation, and motivate transformation through access to hands-on learning and world-class research.



CONNECTS

people of all ages and backgrounds to real-world science, research, and career pathways.

ACCELERATES

innovation through cross-sector collaboration and applied research.

MOTIVATES

transformation in individuals and community outcomes through public education.



CSU SPUR AT A GLANCE

Visitors

- This year: ~100,000
 - ◇ General visitors: 51,273
 - ◇ PreK-12 students: 9,600
 - ◇ Events: 39,243
- Since opening: ~300,000
 - ◇ General visitors: 169,278
 - ◇ PreK-12 students: 26,327
 - ◇ Events: 100,553

Research

- Research Projects: 39

Events & Event Attendees

- This year: 647 meetings and events
- Since opening: 1,705 meetings and events

Community Engagement

- Number of GES partners: 14
- Overall value of GES investment: more than \$2 million

Innovation

- Number of industry and government partners: 89
- Number of innovation programs: 27

Lifelong Learning

- Master's programs: 4
- Ph.D.: 1
- CSU OLLI programs for lifelong learners: 12

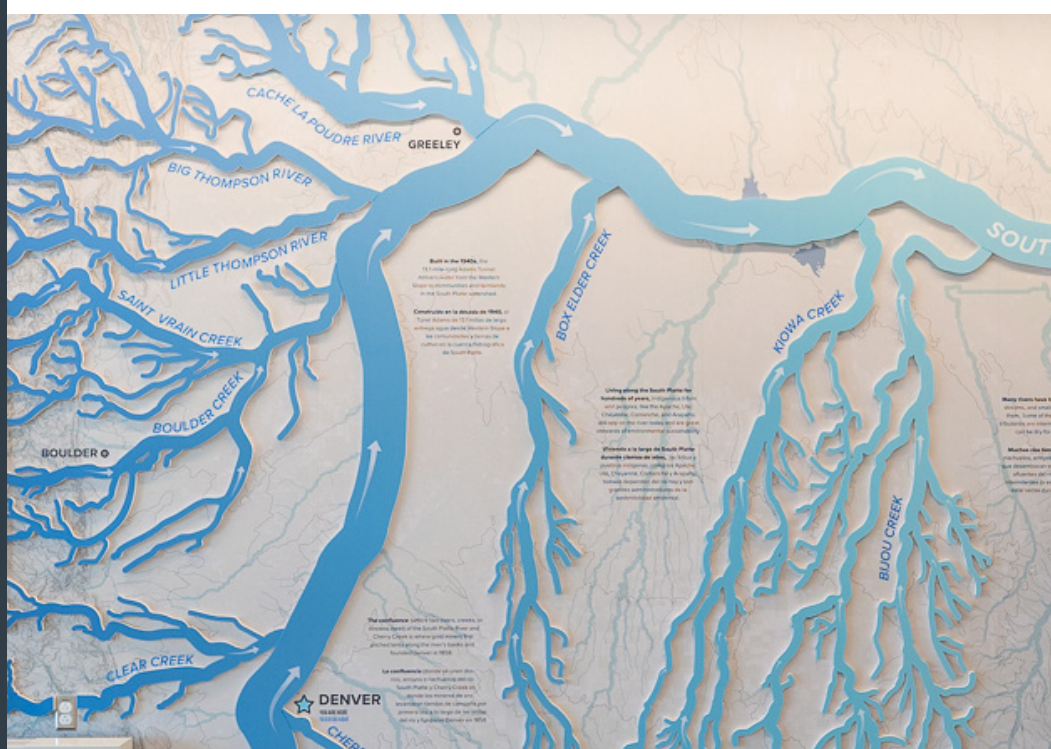
Economic Impact

- Annual economic impact of CSU Spur: \$21.3 million



CSU SPUR AWARDS

CSU Spur has received several awards since opening, including a Downtown Denver Award from the Downtown Denver Partnership in 2024, a U.S. Green Building Council Community Champion Award in 2023, the National Association of College and University Business Officers (NACUBO) 2023 Excellence in Sustainability Award, and the NAIOP Deal of the Year Award in 2022. Denver Public Schools recognized Spur as the Distinguished Government Partner of the Year in 2023 and as a Platinum Star Partner of the Year in 2024 and 2025



94%

OF VISITORS
RATE THEIR
EXPERIENCE AS
**"EXCELLENT" OR
"OUTSTANDING."**

VISITOR ENGAGEMENT

This past year, CSU Spur welcomed more than 100,000 visitors, bringing the total number of visitors since opening in 2022 to about 300,000. Visitors to CSU Spur can engage with 38 different educational exhibits in the three buildings and our Backyard space, visit immersive program areas, interact with staff and volunteers, participate in research, and contribute to the community.

VOLUNTEERS

The visitor experience is supported by nearly 30 active Spur volunteers who provided 1,458 hours of service this past year and nearly 5,400 hours since opening. Programs at CSU Spur host many additional volunteers. For example, the Temple Grandin Equine Center and Humane Colorado together have hosted 336 volunteers who have donated more than 48,000 hours since opening. This includes almost 16,000 hours donated in the past year.

SERVICES PROVIDED

CSU Spur partners with Humane Colorado to offer donor-subsidized veterinary care at CSU Spur. Since opening, the Humane Colorado Veterinary Hospital at Spur has provided care for 86,484 patients, with 28,854 patients served in the past year. The CSU Temple Grandin Equine Center at Spur, which offers equine-assisted activities and therapies, provided more than 5,720 hours of client services this past year, for a total of more than 17,410 hours since opening.

Denver Water also provides services at Spur, testing water samples from throughout their service area. In the past year, Denver Water processed more than 145,000 tests and analyzed 3,400 water samples submitted by customers.

2ND SATURDAY

CSU Spur opens to the community once a month for 2nd Saturdays at CSU Spur, a day of free, family-friendly activities and programs. This year, 2nd Saturdays at Spur hosted more than 17,000 visitors, bringing the total number of 2nd Saturday visitors since the program launched in fall 2022 to over 39,000.





WHAT
VISITORS
ARE
SAYING...

"Awesome place!"
"I learn something new every time."
"I love it here!"

WHAT
TEACHERS
ARE
SAYING...

"CSU Spur is an impressive place! Thanks again for all your efforts to create a valuable experience for our 7th and 8th graders."

"Today has been so magical! This has been the most peaceful and well-organized field trip we've been on."

"Our students had an absolutely fantastic time, and the interactive nature of the field trip truly brought the experience to life. The tour was engaging, educational, and sparked so much enthusiasm and interest among our students."

"There's no doubt the students left with a greater sense of excitement for their future possibilities in college and career."



PreK-12 EDUCATION

In the past year, CSU Spur hosted 285 school groups that brought more than 9,600 PreK-12 students to campus and represented 31 school districts in Colorado and neighboring states. Of these groups, 30% came from schools that receive federal Title I funding (based on serving students at least 75% of whom come from families identified as low-income) and at which the majority of students qualify for the federal Free and Reduced-Price Lunch program.

Field trips at CSU Spur are free and allow students to engage in hands-on lessons and activities in food, water, and health. They also provide broad exposure to careers in these fields through engagement with Spur scientists, demonstrations, tours, classroom programs, and more.

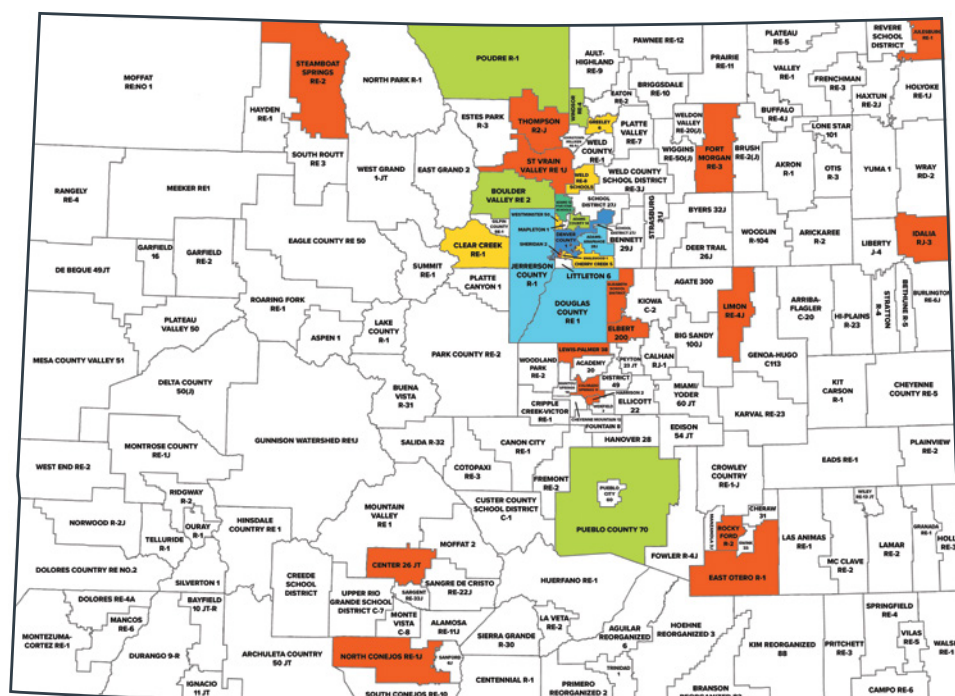
CSU Spur continues to expand its reach and now offers virtual programs for school groups and families. This past year, CSU Spur delivered new virtual programs connecting nearly 100 students with a range of professionals and with CSU researchers in food, water, and health.

THIS YEAR

285
SCHOOL
GROUPS

9,600+
PREK-12
STUDENTS

31
SCHOOL
DISTRICTS



Number of schools: ■ 1 ■ 2-3 ■ 4-5 ■ 6-9 ■ 10-40 ■ 50+

This year, CSU Spur held multiple STEM-focused student events, including the DSST Creative Core STEM Showcase, Denver Public Schools STEAM Expo and Science Fair, and the Envirothon and KidWind competitions. Teacher professional development and support is also vital to work done at CSU Spur. The campus hosted multiple teacher workshops, academic year planning sessions, the Colorado Alliance for Environmental Education's annual conference, and the Colorado Science Conference, an event for science educators from across the state.



Rebekah Buena, above, became a regular at CSU Spur when she completed a horticulture research internship focusing on the campus's green roof while attending Denver's Bruce Randolph High School. Now, she's an honors student at CSU in Fort Collins majoring in landscape architecture – with a full-ride scholarship from the Colorado Garden Foundation – and she's on track to become a first-generation college graduate. Her story was among those shared in the CSU System's *First Degree* video series on the journeys of first-gen college students.

SCHOOL GRADE LEVELS SERVED

30% **ELEMENTARY**

27% **MIDDLE**

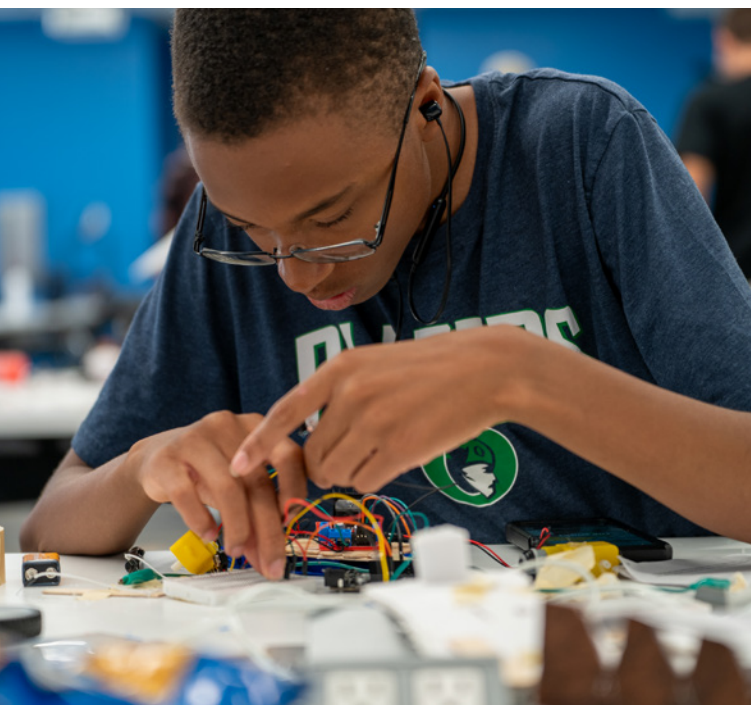
25% **HIGH**

18% **OTHER**

2025 | SUMMER PROGRAMS

1,067 **CAMPERS** 29 **CAMPS**

\$300,000+
**OF FREE PROGRAMS
AND SCHOLARSHIPS**



LIFELONG LEARNING

HIGH SCHOOL AND DUAL ENROLLMENT

CSU Spur hosts a growing number of courses designed to give access to CSU expertise and to help launch high school and early post-secondary learning journeys. For example, a beginning horticulture class is offered in dual enrollment format at Bruce Randolph High School.

In addition to courses, CSU Spur offers opportunities through its internship programs for students to explore careers in food, water, health, and sustainability. This past year, 28 high school interns were placed in programs across the Spur campus. The campus also provides professional learning experiences for undergraduate and graduate students, including a two-week externship at the Humane Colorado Veterinary Hospital at CSU Spur. More than 50 students in CSU's Doctor of Veterinary Medicine program completed the externship in the past year.

WHAT OUR HIGH SCHOOL INTERNS ARE SAYING...

- Destiny, who interned with the Spur Music Lab, found that music provides an emotional outlet that can be a healthy alternative to “wasting time scrolling” on a device.
- Zivi sees a promising career opportunity after an internship with the Soil, Water, and Plant Testing Laboratory.
- MacGregor found a “welcoming culture” during his internship with the Green Roof, and he stayed on to continue the internship during the summer.
- Camden, during an internship with the Bioprocessing Lab, solidified an interest in laboratory work while testing elevator buttons and other common campus touchpoints for bacterial growth.



CSU SPUR START

Starting fall 2025, the CSU Spur Start program will provide a unique pathway for CSU students to complete the first year of the undergraduate program at CSU Spur before continuing their studies at the flagship Fort Collins campus. The program, designed for students from the Denver metro area, will give participants the opportunity to interact with world-class researchers, scholars, and creators at Spur. With the option of living at home in the first year, students will be able to adjust to the challenges of post-secondary education in familiar surroundings while possibly saving on residential housing costs. Spur Start will be part of CSU's Key Communities, all of which are designed to provide a support network as students transition into college life.



GRADUATE PROGRAMS

CSU Spur has several graduate programs designed to meet the needs of diverse learners. The following programs served students in the past year.

- Master's in Social Work
- Master's in Agribusiness & Food Innovation Management
- Professional Master's in Systems Engineering
- Professional Master's in Biomanufacturing & Biotechnology
- Ph.D. in Organizational Learning, Performance, & Change
- Doctor of Veterinary Medicine Community Practice Rotations

ADULT LEARNING

The popular CSU OLLI program, which offers coursework for learners over age 50, expanded to CSU Spur, offering 12 courses in the first year. Additional courses and family learning opportunities are being planned for next year.

RESEARCH

Spur is home to several established research projects, with more research projects under development. CSU Spur researchers secured approximately \$27 million in funding this year via nearly 45 competitive grants.

Projects include research on:

- Food product development in collaboration with industry partners at the Food Innovation Center.
- Performance textiles aligned with Colorado's outdoor industry.
- Efficacy of equine-assisted therapies through the Temple Grandin Research Center.
- Impacts of various water types on plant growth, and evaluation of the potential to leverage "green infrastructure" for water filtration.
- Translational neurological research.
- Agrivoltaics (growing plants under solar panels) using the green roof of Spur's Hydro building.
- Controlled environment ag research (in Spur's growth chambers and greenhouses).



TRANSDISCIPLINARY RESEARCH

Sonali Diddi, an associate professor in CSU's Department of Design and Merchandising, is leading efforts at Spur to engage academic and industry partners in rethinking fashion for a regenerative future. This has included bringing together a consortium of business partners to inform future research and education in fashion and the outdoor recreation industry. The goal is to offer a new certificate program and to establish the Sustainable and Regenerative Fiber Innovation Collaborative, a transdisciplinary, multistakeholder, and multi-institutional regional research cluster.



OUTREACH

As an anchor institution, CSU Spur is committed to supporting community engagement, growth, and wealth building through partnerships with community organizations, local purchasing, community-responsive programs, community-engaged research, and more. CSU Spur has focused on community responsiveness for more than a decade and has built strong partnerships in the Globeville and Elyria-Swansea (GES) neighborhoods.

CSU SPUR HAS:

- Partnered with 17 organizations in the 80216 zip code, where Spur is located.
- Connected with more than 4,500 residents, many of whom had no prior link to CSU Spur.
- Continued a neighborhood scholarship which, to date, has provided support for 16 students from the 80216 ZIP code to attend any CSU System institution.
- Provided ~436 hours of community-based work and 240 volunteer hours through events and programs.
- Reached 8,816 people with outreach events in the GES neighborhoods.
- Donated 1,412 pounds of produce grown onsite to a local nonprofit for distribution.
- Offered free registration or scholarships to CSU Spur events, conferences, services, classes, and youth camps, valued at nearly \$480,000 overall, most of that — \$465,000 — in the past year.
- Created significant business (more than \$70,000) for local catering companies by encouraging event planners to use a pre-screened local list.

COMMUNITY EVENTS

This past year, CSU Spur hosted 55 community events, including:

- Sabor Comunitario community-led cooking and business development classes.
- CSU Spur Community cooking classes.
- 2nd Saturdays at CSU Spur (monthly) and quarterly community events for area families.
- Student and family events with the local middle/high school, including sponsorship of a career, college, and resource fair.
- CSU Spur Service Day with a South Platte River cleanup.
- Bioblitz river health scans with scientific partners.
- Meetings and events for various neighborhood organizations.

Classes

Salud Con-Ciencia monthly cooking classes attracted almost 80 participants, more than half of whom came from surrounding neighborhoods. The classes emphasize culturally responsive foods and provide guidance and cooking tips for increasing dietary fiber consumption and addressing chronic health concerns.



Partnerships

This past year, CSU Spur strengthened partnerships with several local organizations, including Birdseed Collective, Focus Points, the GES Coalition, Tepeyac Community Health Center, Denver Urban Gardens, Prodigy Coffee, Volunteers of America, The Greenhouse, Project Angel Heart, Valdez Perry Library, Bob Ragland Branch Library, Swansea Recreation Center, Johnson Recreation Center, Emmanuel's Bakery, Northeast Transportation Connections, Girls, Inc., the Denver Art Museum, the Denver Museum of Nature & Science, and others.





INNOVATION

The growing innovation ecosystem at CSU Spur is connecting students, researchers, and entrepreneurs through hands-on programming, real-world partnerships, and industry-facing initiatives.

SPUR CLIMATE HUB

The CSU Spur Climate Hub is poised to play a central role supporting and accelerating evidence-based climate work. Guided by a new director, the team has identified strategic priorities, including a focus on providing climate services, hosting trainings and convenings, and serving as a one-stop shop to access CSU's extensive climate expertise. The Hub, which co-hosted the inaugural Colorado Climate Week at CSU Spur, will hold a public launch event in fall 2025.

AG INNOVATION CENTER

The Ag Innovation Center advanced producer-driven innovation by supporting 40 ag-tech companies addressing challenges in water, livestock sustainability, and developing a waste-minimizing "circular" economy. It hosted the second annual Offal Party and Genuine Leather Fashion Show, generated more than 7.25M media impressions, and secured \$700,000 in in-kind investments for its manure innovation initiative.

FOOD INNOVATION CENTER

The CSU Spur Food Innovation Center expanded programming this year, partnering with 93 companies on food product development and sensory testing while also supporting Colorado's food economy as host of the 2nd Annual Colorado Food Showcase, an event that involved 33 food brands and attracted 910 visitors. The R&D team for Sweet Loren's, a national, "allergen-friendly" producer of cookie dough and baked goods, is a new tenant.

INSTITUTE FOR ENTREPRENEURSHIP (I4E)

I4E supported Spur-based startups like FarmLab through mentorship, venture programming, and events while strengthening ties to Denver's broader innovation ecosystem. It hosted the Venture Validator summer camp for middle and high school students and co-founded the Colorado Entrepreneurship Executives Network (CEEN), a statewide community of leaders advancing innovation.

WATER TECHNOLOGY ACCELERATOR PLATFORM (TAP)

The Water TAP launched seven research pilots and supported over \$3M in funding proposals, with \$1M awarded. The platform hosted 250+ hours of engagement through tours and symposia, advancing fit-for-purpose water reuse. A new industry membership program will launch in late 2025 to formalize public-private partnerships and support financial sustainability.



COMMUNICATIONS

WIZ KID

Wiz Kid is in its second season! Each episode introduces learners to CSU Spur and Colorado State University through engaging STEAM lessons that cover topics from the scientific method and at-home experiments to pollinators and outdoor learning activities. The first season of Wiz Kid garnered more than 100,000 views on YouTube, and the latest episode had more than 1,200 views in a single month. Wiz Kid episodes will begin streaming on TV networks this fall.

REACH AND IMPACT

CSU Spur communications channels and earned media had wide reach, both locally and nationally.

- Earned media reports focused on CSU Spur activities or referencing the campus include:
 - ◊ 824 local media hits and 2,055 mentions in national and digital media since opening.
 - ◊ 211 local media hits and 228 mentions in national and digital media in the past year, with a reach of 1.1 billion.

DEPTH AND BREADTH

- Almost 5,000 downloads of the CSU Spur of the Moment podcast, which has 40 episodes.
- More than 6 million social media impressions since opening, 2.1 million of them in the past year.
- More than 6,000 readers on SOURCE, the CSU news website, for CSU Spur stories in the past year.



EVENTS

CSU Spur is a place that connects. The Spur campus not only connects our students, faculty, staff and partners, but also hosts conferences and meetings that allow our larger community to Connect and Accelerate their work. This year, CSU Spur continued to grow as a hub for convening mission-aligned events and meetings, with most gatherings focused on innovation, outreach, and engagement.



CAMP CLEANTECH

More than 100 leaders, experts, and entrepreneurs in the renewable energy sector gathered at CSU Spur in August 2024 for Camp Cleantech, a program offered by the U.S. Department of Energy National Renewable Energy Laboratory's (NREL's) Innovation and Entrepreneurship Center (IEC) to support development of new businesses. The program, spread over a day and a half, involved 21 workshops on topics ranging from building relationships with utilities and leveraging artificial intelligence to best practices for partnering with communities on clean energy projects and manufacturing.

SINCE OPENING

1,705
EVENTS

100,553
GUESTS

THIS YEAR

647
EVENTS

39,243
GUESTS

39%
**COMMUNITY
EVENTS**



COMMUNITY

In addition to hosting more than 60 university programs, CSU Spur is home to several mission-aligned organizations and partners, including innovative companies that lease desk and lab space and that collaborate with each other and the university.

Organizations that have a presence at or call Spur home include:



SUSTAINABILITY

CSU Spur's three buildings showcase cutting-edge sustainability features and host collaborative sustainability research projects that leverage the campus's unique facilities. Research at Spur advances knowledge in agrivoltaics, green roofs, stormwater management, and water quality. The facilities are also designed to promote the health and well-being of Spur staff and visitors through healthy materials, daylighting and views, and active design.

Both the Vida and Terra buildings have received LEED Gold certification, and the Hydro building is on track to achieve LEED Platinum. The Spur campus uses a central utility system that recovers heat from wastewater and meets 90% of the campus's heating and cooling needs with a low-carbon energy source.



COMMITTED TO SUSTAINABILITY

- Spur will save 200 gallons of potable water a day through its graywater system.
- CSU Spur diverts about 25% of its waste from landfills through recycling and composting.
- Spur's laboratories are in the process of becoming green certified.
- The facilities have been evaluated for additional energy savings through educational efforts and motivational campaigns focused on occupant behavior.
- CSU Spur has created a guide for use by event hosts to make Spur events more sustainable.



THANK YOU FOR SUPPORTING CSU SPUR

CSU Spur was built for the community and could not drive impact without community partners. Support for education brings the Spur experience and its impact to new audiences. Research collaborations at CSU Spur build connections to help solve the most pressing issues of the day, and they provide real-world experiences to prepare the next generation of thinkers and problem solvers. Investments in outreach and innovation are multiplying our impact by helping CSU Spur drive new discoveries.

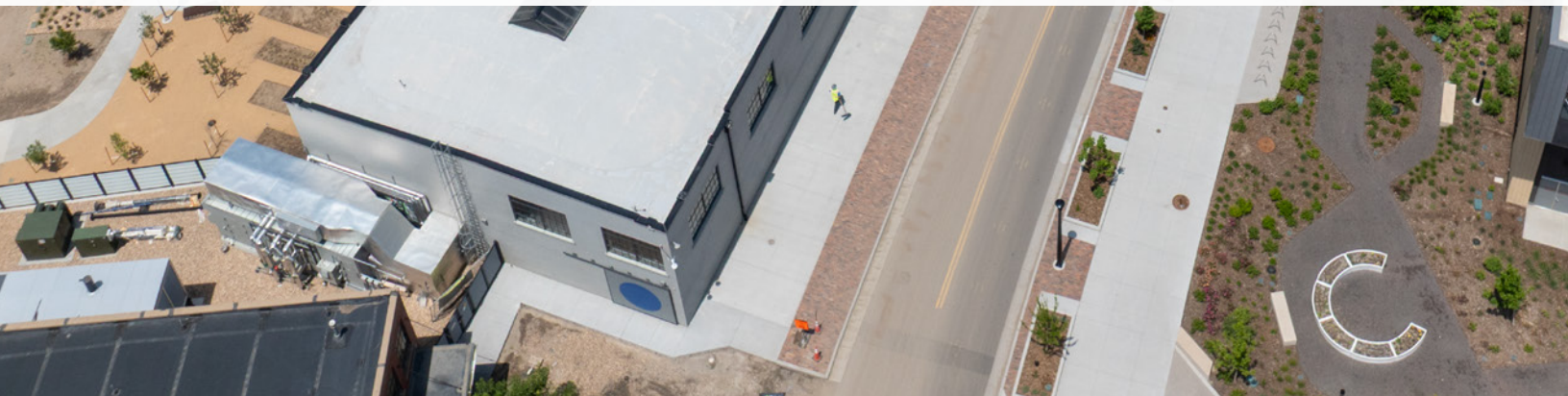
Thank you to previous and current funders who have supported CSU Spur and magnified its impact through education, research, innovation, and outreach.



Governor Tom Vilsack
and Christie Vilsack



Ardent Mills



Learn more about how to support the mission of Spur, including naming opportunities and support for core mission and impact areas, by contacting Jocelyn Hittle at jocelyn.hittle@colostate.edu.





CSU SPUR
COLORADO STATE UNIVERSITY



Learn more at
CSUSpur.org

